



Capital Projects Update

Board Meeting – February 7, 2017



Annual Operating Plan links

2.2.c – Communication and engagement with families, staff, and community strengthens understanding of and support for district strategic priorities.

3.4.a – Our students and staff learn and work in an emotionally, physically and intellectually safe and secure environment.

4.1.a – Long-term planning in finances, staffing, technology, and facilities are intentionally and systematically driven by student enrollment, learning measures and strategic priorities.



Outline

- Update on current projects funded by 2016 capital bond and levy, and other funding sources
- Update on events coming up in support of a future capital bond proposal

Capital Projects Update



2016

2022

DRAFT - Preliminary 2016 Bond & Levy Project Schedule

Everett Public Schools	5-May-16	2016		2017		2018		2019		2020		2021		2022	
		Summer	Fall	Winter	Spring	Summer	Fall	Winter	Spring	Summer	Fall	Winter	Spring	Summer	Fall
Bond Projects															
New Construction															
Elementary No. 18		█	█	█	█	█	█	█	█	█	█	█	█	█	█
Modernizations															
North MS Modernization		█	█	█	█	█	█	█	█	█	█	█	█	█	█
Woodside ES Modernization					█	█	█	█	█	█	█	█	█	█	█
Systems Upgrades															
HVAC Upgrades at 8 Sites				█	█	█	█	█	█	█	█	█	█	█	█
EHS Main Bldg Exterior Finish Restoration								█	█	█	█	█	█	█	█
Gateway MS Roofing Replacement				█	█	█	█								
Site Improvements															
EHS Lincoln Field Replacement					█	█	█	█							
Portable Classrooms - New															
Purchase Property for Elementary 19				█	█	█	█								
Technology															
Technology Infrastructure								See Technology Timeline							
Telephone & Voice Mail System Replacement								See Technology Timeline							
Levy Projects															
Flooring Replacements															
Flooring Replacements at 6 sites				█	█	█	█					█	█	█	█
Roofing Replacements															
Roofing Replacements at 6 sites								█	█	█	█	█	█	█	█
Fire Alarm Upgrades															
Fire Alarm Upgrades at 7 sites				█	█	█	█	█	█	█	█	█	█	█	█
Painting Projects															
Painting Projects at 7 sites												█	█	█	█
Safety & Security Upgrades															
Safety & Security Upgrades at 18 sites				█	█	█	█	█	█	█	█	█	█	█	█
Ramp Replacements															
Ramp Replacements															█
Portables															
Portables				█	█	█	█	█	█	█	█	█	█	█	█
Technology								See Technology Timeline							
Pre-design Activities		█	█												
Ed Specs & Programming		█	█												
Design & permitting		█	█												
Construction & Move-in		█	█												

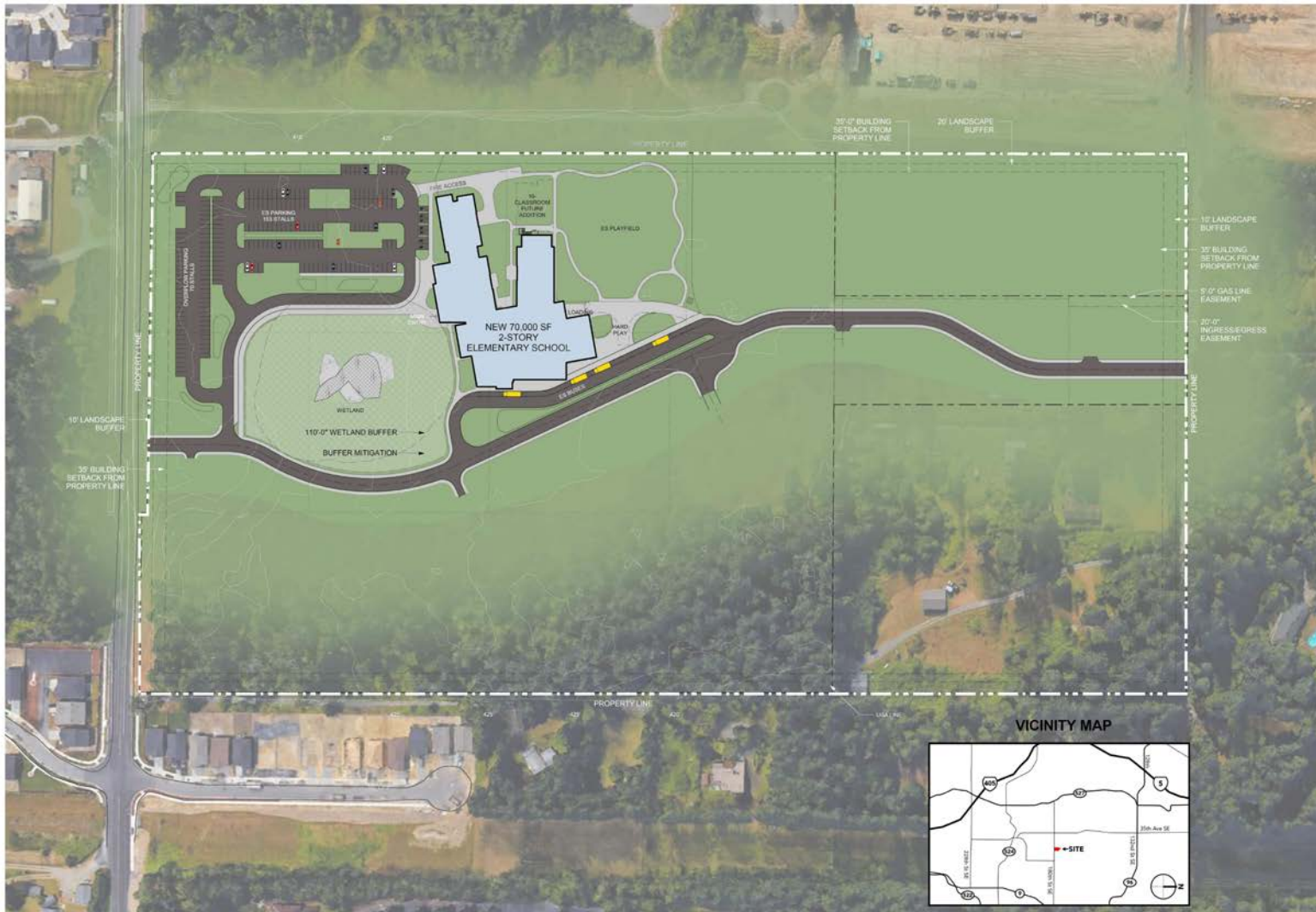
This schedule is preliminary, and actual schedule will vary depending on time required for governmental approvals (land use permit, building permit, etc.), on-site and off-site improvements, unforeseen or changing conditions, market conditions, and other factors.



2016 Capital bond/levy projects

- New elementary school no. 18
- North MS modernization and partial replacement
- Safety and security upgrades
- Gateway MS HVAC and roof replacement
- Portable classrooms
- Flooring replacement at Hawthorne ES
- Fire alarm panel replacement at Heatherwood MS
- Technology infrastructure
- Purchase property for future elementary school

New Elementary School No. 18



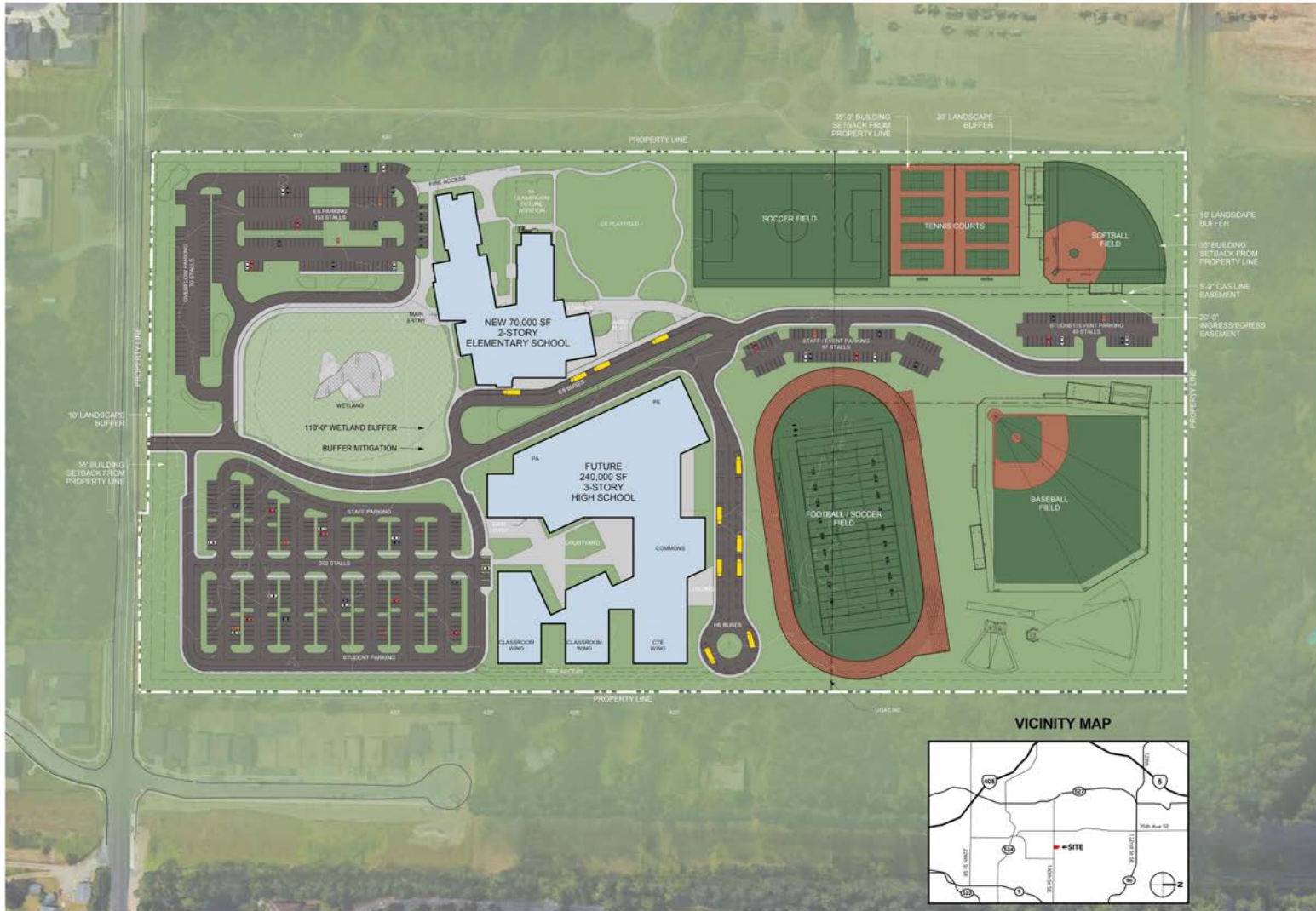
 **DYKEMAN**

DRAFT
01.26.17

Preliminary Site Plan for
Elementary School #18

Everett Public Schools

Future High School



DYKEMAN

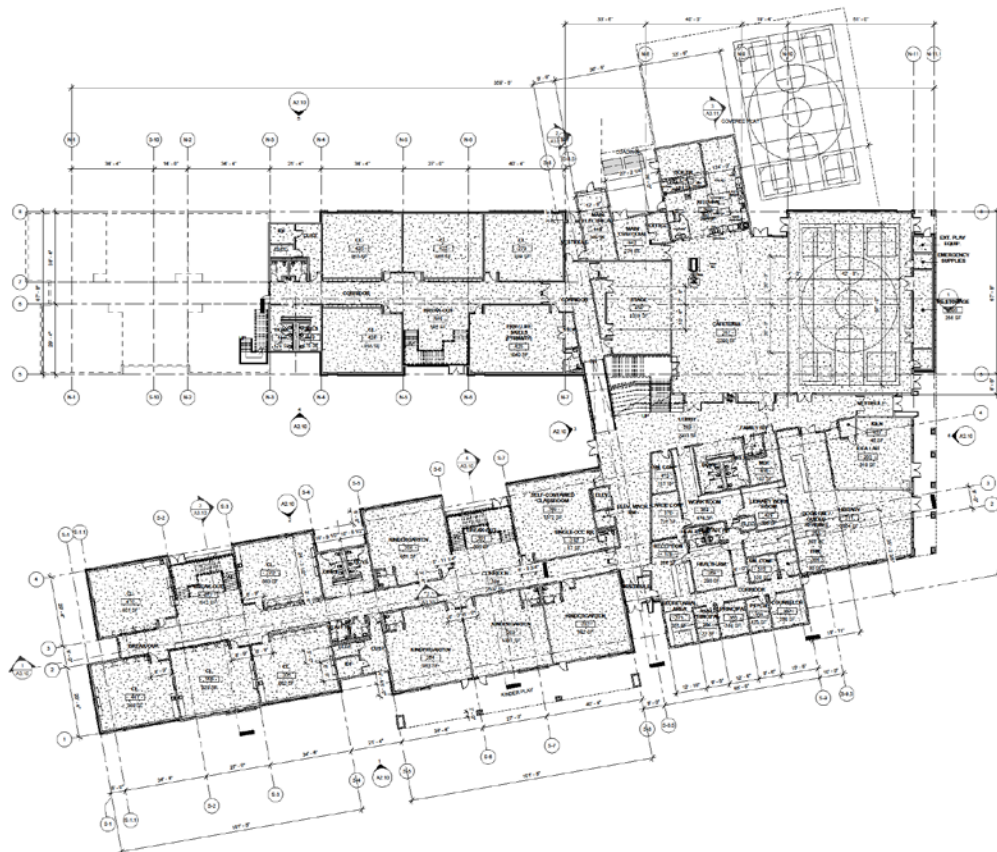


DRAFT
01.26.17

Preliminary Site Plan for
Comprehensive HS #4 and
Elementary School #18

Everett Public School

New Elementary School No. 18



1 Overall Floor Plan - Level 1
1/8" = 1' - 0"

DYKEMAN

ARCHITECTURE • INTERIOR DESIGN • LANDSCAPE ARCHITECTURE

1410 2ND AVENUE, SUITE 400, SEASIDE, WA 98138
 TEL: 206.365.3333 FAX: 206.365.3335
 WWW.DYKEMANARCHITECTS.COM

CONSULTANT

REGISTRATION STATE

PROJECT IDENTIFICATION

ELEMENTARY SCHOOL #18
 FOR
EVERETT SCHOOL DISTRICT #2
 AT
 180th St. S.E.
 Bothell, WA 98012

SCHEMATIC DESIGN
 01/23/2016

DESIGNED BY
 1. DYPKEMAN ARCHITECTURE, INC.
 2. THE EVERETT SCHOOL DISTRICT BOARD OF DIRECTORS
 3. MEMBER OF THE EVERETT SCHOOL DISTRICT BOARD OF DIRECTORS
 APPROVED PROJECT FOR THE EVERETT SCHOOL DISTRICT

NO.	DATE	DESCRIPTION

PROJECT NUMBER: 12016-001
 PROJECT DATE: 1/23/16
 PROJECT PHASE: SCHEMATIC
 CLIENT: EVERETT SCHOOL DISTRICT #2
 PROJECT ADDRESS: 180th St. S.E., Bothell, WA 98012
 ARCHITECT: DYPKEMAN ARCHITECTURE, INC.
 ARCHITECT: 12016-001

DRAWING TITLE

Overall - First Floor Plan

DRAWING NUMBER

A1.01

New Elementary School No. 18



North MS Modernization



SCALE: 1" = 100'-0"

2-STORY CLASSROOM ADDITION
ADMIN / MULTIPURPOSE ADDITION
PARTIAL GYM MODERNIZATION
TOTAL: 105,000 SF



Huttball&Oremus

DRAFT
12.14.15

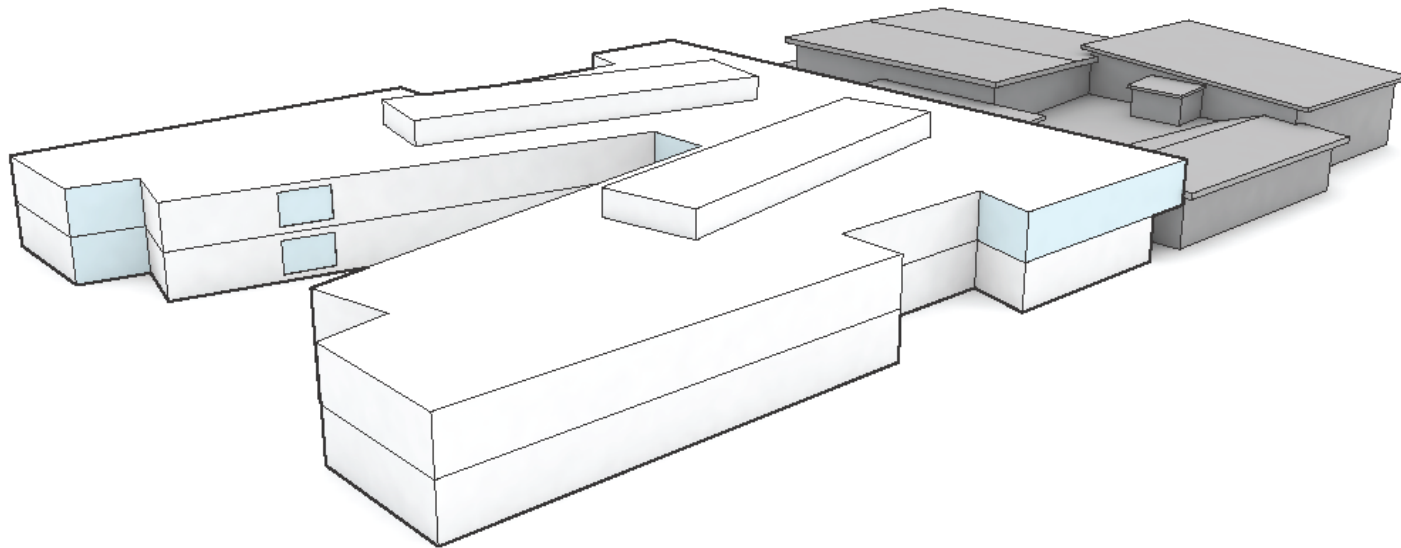
North Middle School
Classroom Additions
and Modernization

Everett Public Schools
2014 Bond Planning

North MS Modernization



NAC | Everett North Middle School

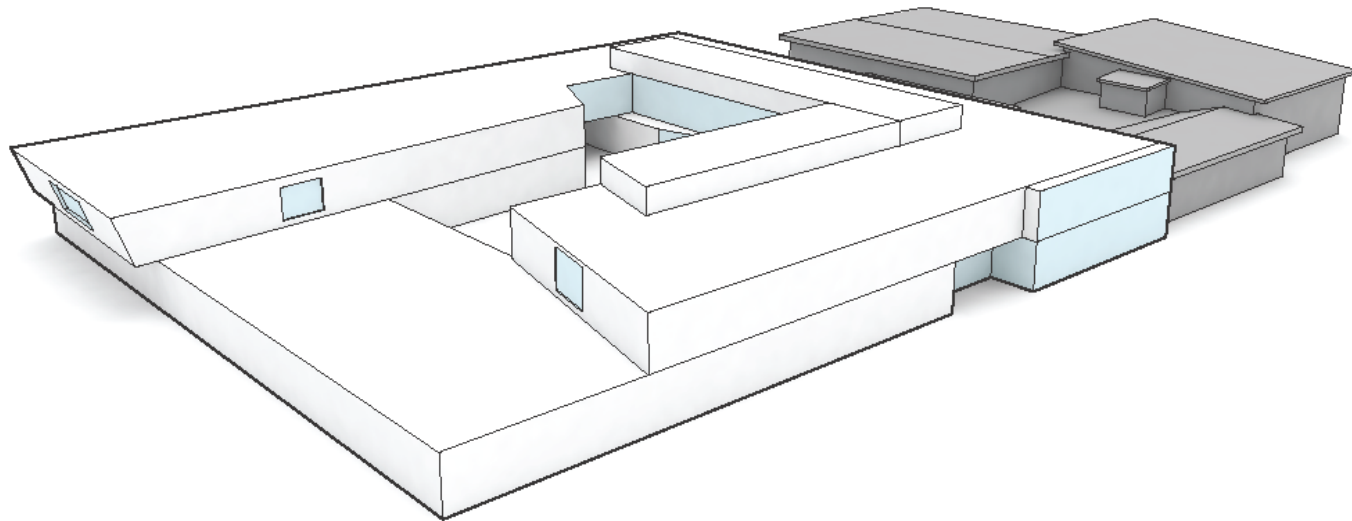


Scheme B - 3D View

North MS Modernization



NAC | Everett North Middle School

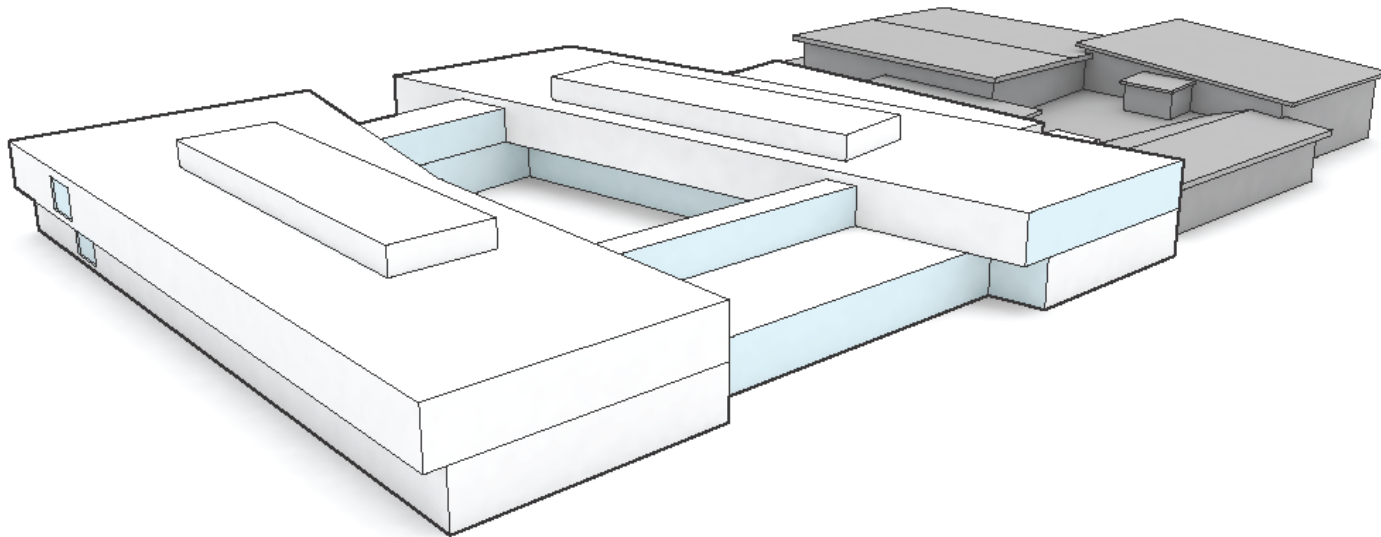


Scheme A.1 - 3D View

North MS Modernization

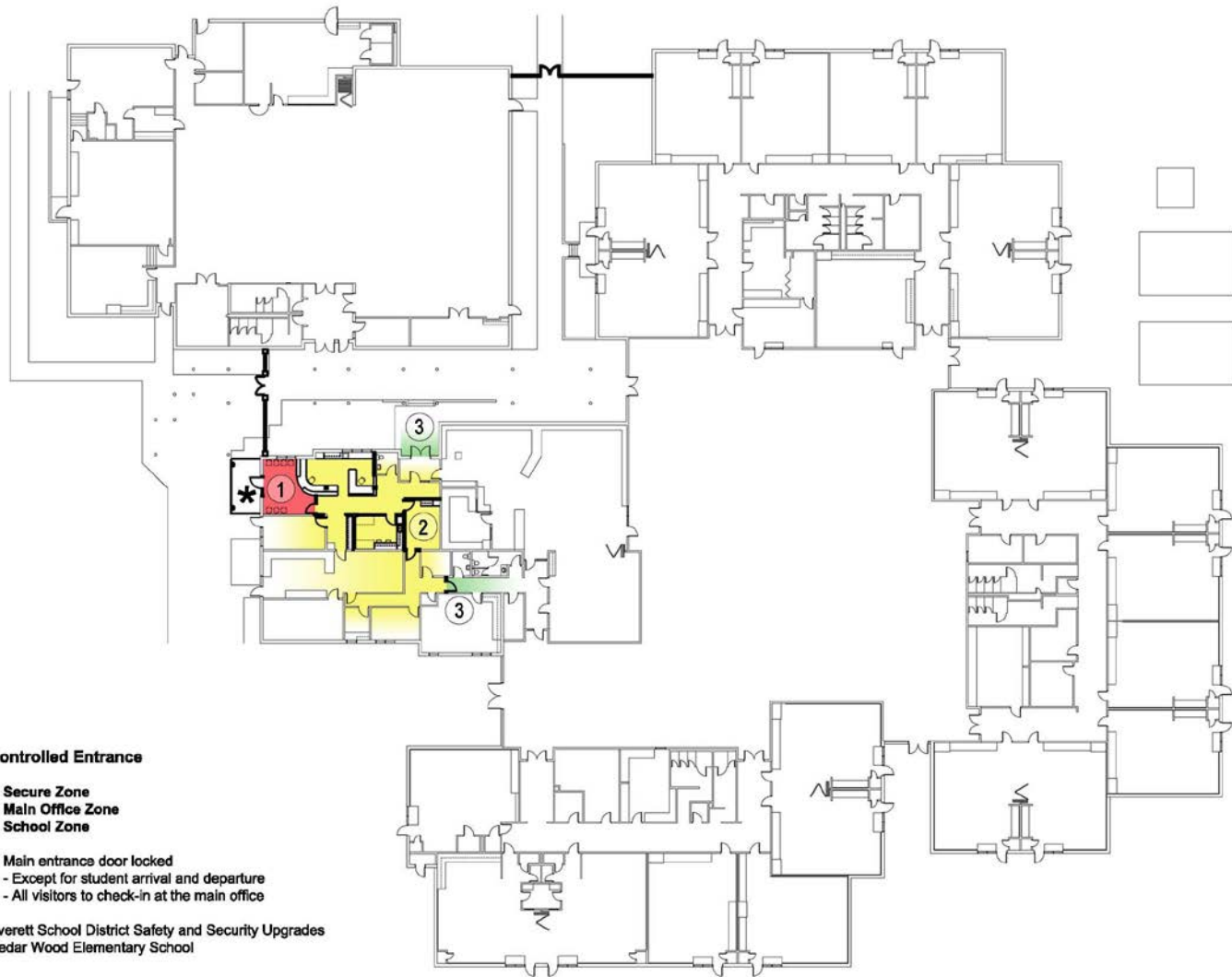


NAC | Everett North Middle School



Scheme E.1 - 3D View

Safety and Security Upgrades – Cedar Wood ES



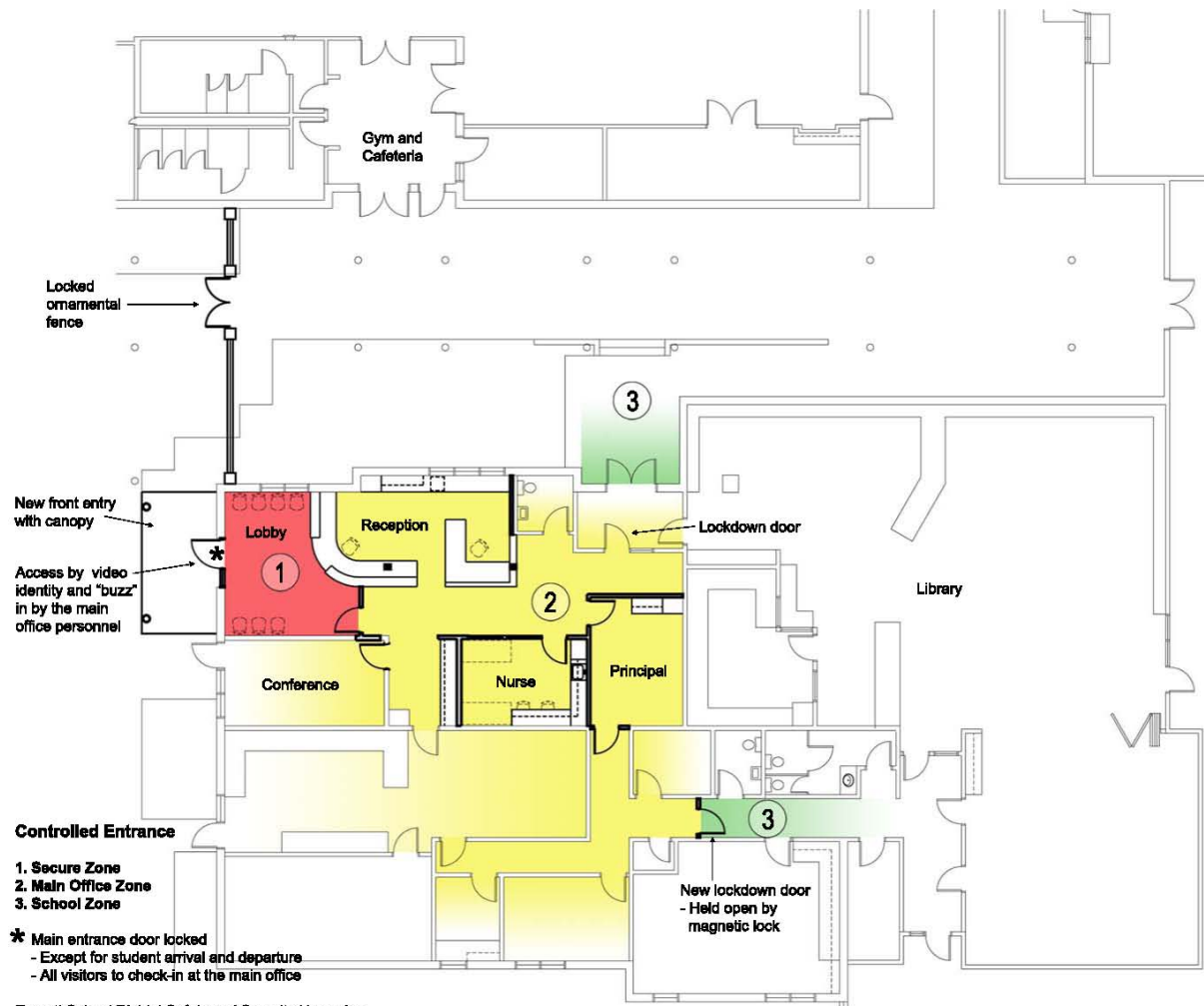
Controlled Entrance

1. Secure Zone
2. Main Office Zone
3. School Zone

- * Main entrance door locked
 - Except for student arrival and departure
 - All visitors to check-in at the main office

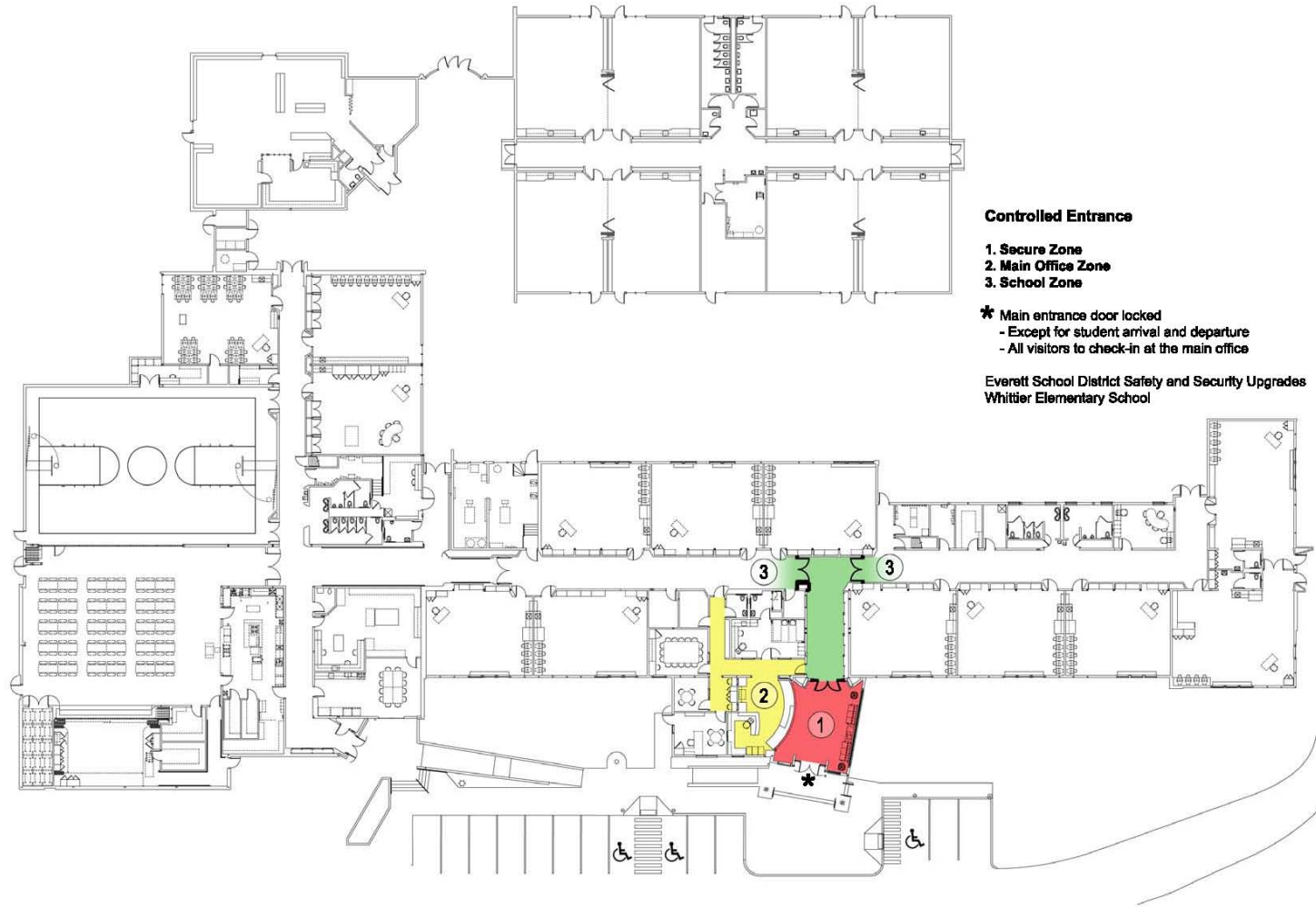
Everett School District Safety and Security Upgrades
Cedar Wood Elementary School

Safety and Security Upgrades – Cedar Wood ES

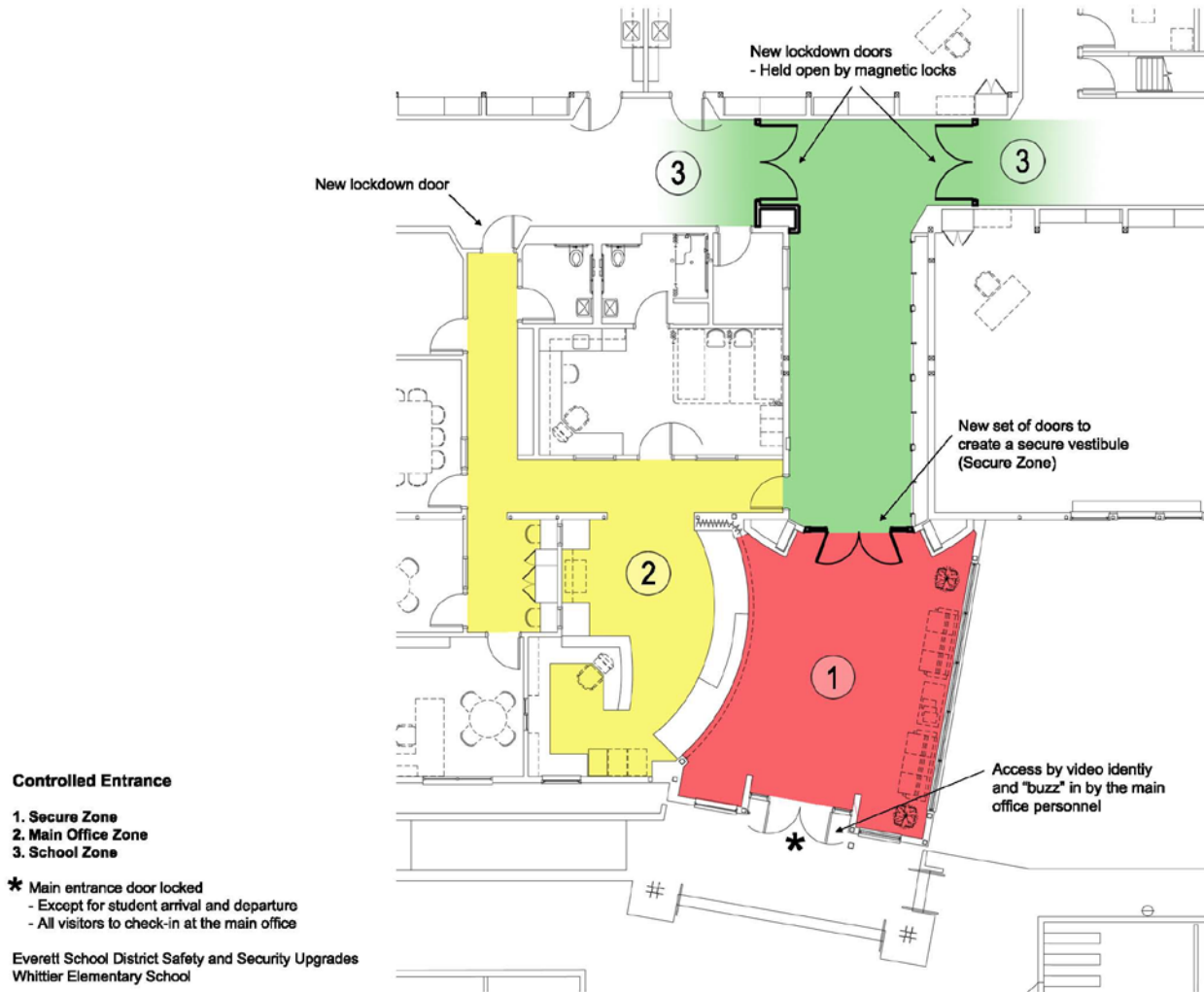


Everett School District Safety and Security Upgrades
 Cedar Wood Elementary School

Safety and Security Upgrades – Whittier ES



Safety and Security Upgrades – Whittier ES





Other capital projects

- Sequoia HS HVAC controls and fire dampers
- Synthetic turf fields at Cascade HS and Jackson HS
- Longfellow Building demolition and site restoration
- Stadium reader board
- Purchase property for future high school on 174th Street SE

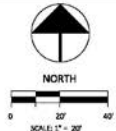
Synthetic Turf Fields – Cascade High School



REVISION	DATE



CASCADE HIGH SCHOOL
SYNTHETIC TURF FIELD



PRELIMINARY	
DATE	9-23-16
SCALE	1"=10'
DRAWN	DMD
CHECKED	ESG
COPYRIGHT	© 2016 D.A. HOGAN & ASSOCIATES

LAYOUT PLAN

SHEET
F-1.1

SYNTHETIC TURF 76,000 SF

File: F-1.1 Cascade High School - Everett - Everett Public Schools - 10-10-16 10:25:00am

Synthetic Turf Fields – Jackson High School



LAYOUT NOTES

- ① 84,940SF NEW FLAT SYNTHETIC TURF SURFACE ON A SUPPLEMENTAL RESILIENT PAD
- ② CUT AND PATCH EXISTING NORTH D-AREA TO ACCOMMODATE NEW DUAL LONG/TRIPLE JUMP INCLUDING NEW D-AREA CURB, 2,180SF NEW BASE-MULTI STRUCTURAL SPRAY RUNWAY SURFACING AND A COMPLETE 15,800SF D-AREA OVERLAY
- ③

NOTE LEGEND
 * (INDICATES GENERAL CONSTRUCTION NOTE)
 (INDICATES SPECIFIC CONSTRUCTION NOTE)

LAYOUT LEGEND

- SAND BASED NATURAL TURF
- SYNTHETIC TURF AND PERMEABLE AGGREGATE
- RUBBERIZED SURFACING AND ASPHALT PAVING
- SAND
- CONCRETE
- CHAINLINK FENCE AND CONCRETE CURB
- CHAINLINK FENCE
- CONCRETE CURBING
- LIMIT OF SYNTHETIC TURF AND CONCRETE EDGE AND/OR
- CATCH BASIN INLET (C.B.I.) TYPE 1
- CATCH BASIN INLET (C.B.I.) TYPE 2

- MEDIUM GREEN COLORED TENNIS COURT ACRYLIC SURFACING
- US OPEN BLUE COLORED TENNIS COURT ACRYLIC SURFACING

EXHIBIT C-2



H.M.JACKSON
HIGH SCHOOL
SYNTHETIC TURF
FIELD



NORTH
 0 20' 40'

PROGRESS SET

DATE	3-13-17
SCALE	1"=40'
DRAWN	DND
CHECKED	RAS
DESIGNED	DAVID L. ANDERSON

SCHEMATIC
PLAN

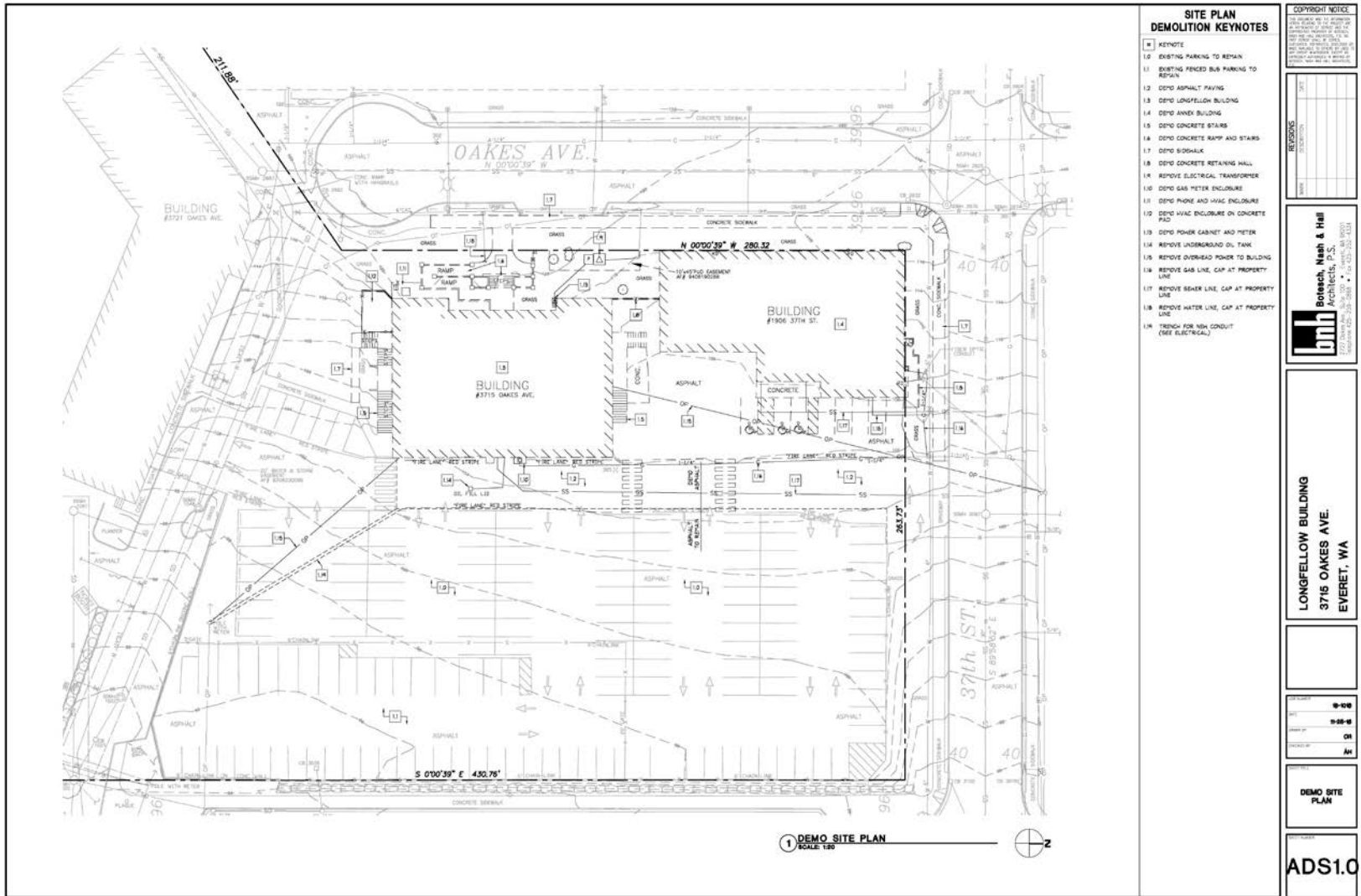
SHEET
F-1.0

Plan F-1.0 Jackson High School Synthetic Turf Field Date: 11-16-17 1:23:09pm

Longfellow Demolition and Site Restoration



Longfellow Demolition and Site Restoration



SITE PLAN DEMOLITION KEYNOTES

- 1 KEYNOTE
- 1.0 EXISTING PARKING TO REMAIN
- 1.1 EXISTING FENCED BUS PARKING TO REMAIN
- 1.2 DEMO ASPHALT PAVING
- 1.3 DEMO LONGFELLOW BUILDING
- 1.4 DEMO ANNEX BUILDING
- 1.5 DEMO CONCRETE STAIRS
- 1.6 DEMO CONCRETE RAMP AND STAIRS
- 1.7 DEMO LOGSKALK
- 1.8 DEMO CONCRETE RETAINING WALL
- 1.9 REMOVE ELECTRICAL TRANSFORMER
- 1.10 DEMO GAS METER ENCLOSURE
- 1.11 DEMO PANE AND HVAC ENCLOSURE
- 1.12 DEMO HVAC ENCLOSURE ON CONCRETE PAD
- 1.13 DEMO POWER CABINET AND METER
- 1.14 REMOVE UNDERGROUND OIL TANK
- 1.15 REMOVE OVERHEAD POWER TO BUILDING
- 1.16 REMOVE GAS LINE, CAP AT PROPERTY LINE
- 1.17 REMOVE SEWER LINE, CAP AT PROPERTY LINE
- 1.18 REMOVE WATER LINE, CAP AT PROPERTY LINE
- 1.19 SYMBOL FOR NON CONDUIT (SEE ELECTRICAL)

COPYRIGHT NOTICE
THIS DOCUMENT IS THE PROPERTY OF BORECH, NASH & HILL ARCHITECTS, P.S. AND IS TO BE USED ONLY FOR THE PROJECT AND SITE SPECIFICALLY IDENTIFIED HEREIN. ANY REPRODUCTION OR TRANSMISSION OF THIS DOCUMENT IN ANY FORM OR BY ANY MEANS, WITHOUT THE WRITTEN PERMISSION OF BORECH, NASH & HILL ARCHITECTS, P.S. IS PROHIBITED.

REVISIONS

NO.	DATE	DESCRIPTION

Borech, Nash & Hill
Architects, P.S.
10000 1st Avenue, Everett, WA 98201
Tel: 425-335-3888
Fax: 425-335-3889

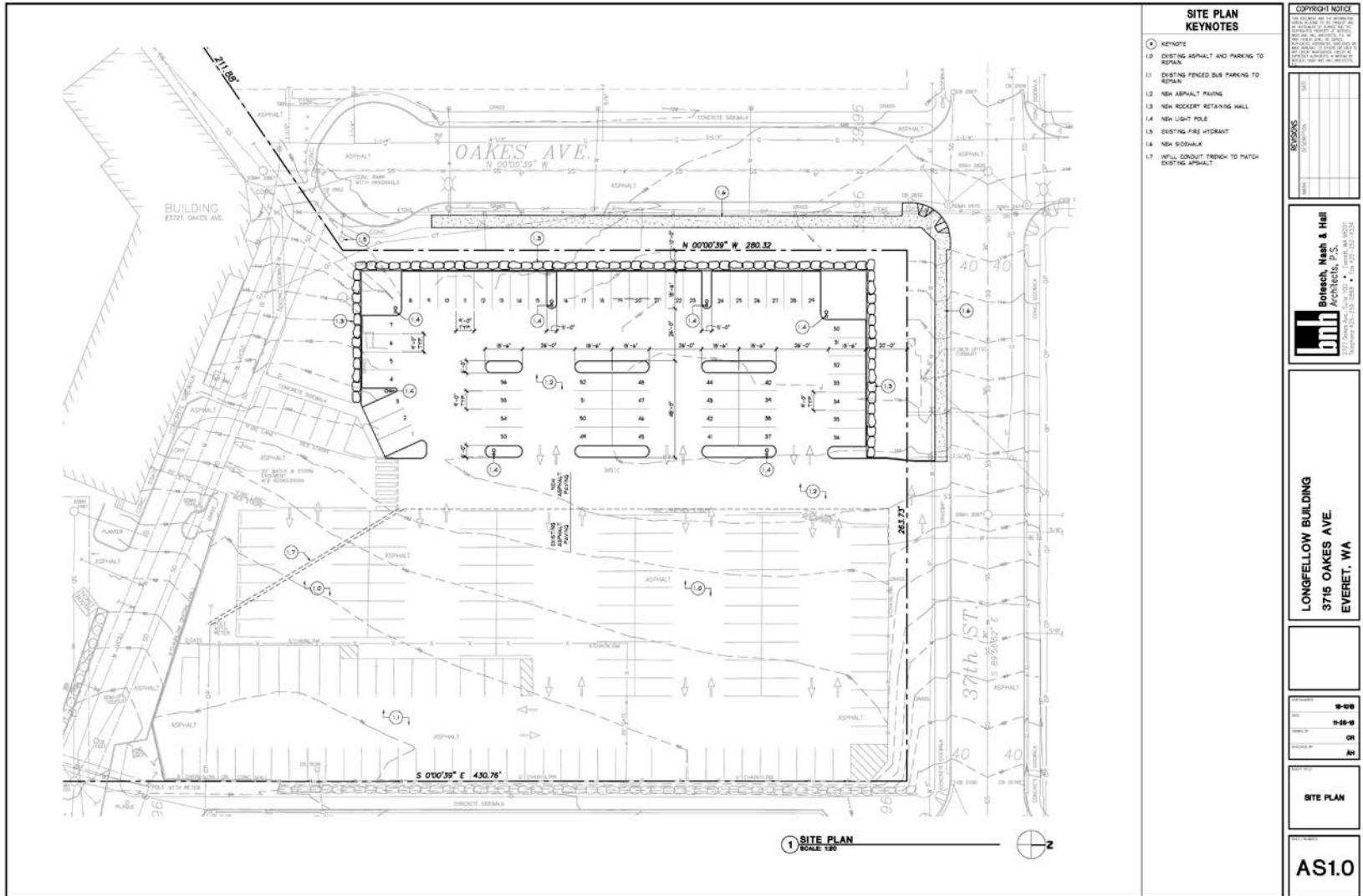
LONGFELLOW BUILDING
3715 OAKES AVE.
EVERETT, WA

PROJECT NO. 10-108
DATE 11-28-16
DRAWN BY GH
CHECKED BY AH

DEMOSITE PLAN

ADS1.0

Longfellow Demolition and Site Restoration



SITE PLAN KEYNOTES

- 1 KEYNOTE
- 1.2 EXISTING ASPHALT AND PARKING TO REPAIR
- 1.3 EXISTING FENCED BUS PARKING TO REMOVE
- 1.3.2 NEW ASPHALT PAVING
- 1.3.3 NEW ROCKERY RETAINING WALL
- 1.4 NEW LIGHT POLE
- 1.5 EXISTING FIRE HYDRANT
- 1.6 NEW SIDEWALK
- 1.7 18" MILL CONDUIT TRENCH TO PATCH EXISTING ASPHALT

COPYRIGHT NOTICE
THIS DOCUMENT IS THE PROPERTY OF BOLESCH, NASH & HALL ARCHITECTS, P.S. IT IS TO BE USED ONLY FOR THE PROJECT AND SITE SPECIFICALLY IDENTIFIED HEREIN. ANY REUSE OR REPRODUCTION OF THIS DOCUMENT WITHOUT THE WRITTEN PERMISSION OF BOLESCH, NASH & HALL ARCHITECTS, P.S. IS STRICTLY PROHIBITED.

REVISED	DATE	DESCRIPTION

Bolesch, Nash & Hall
Architects, P.S.
2217 10th Ave., Suite 100 • Everett, WA 98201
PH: 425.336.1111 • FAX: 425.336.1112

LONGFELLOW BUILDING
3716 OAKES AVE
EVERETT, WA

DATE	10-10-16
SCALE	1/8" = 1'-0"
CHECKED BY	CR
DESIGNED BY	AM

SITE PLAN

AS1.0

Longfellow Demolition and Site Restoration



FORMER SITE OF THE LONGFELLOW SCHOOL



The school was built by contractor Robert B. McAdam and designed by architect Wesley W. Hastings, both one-time Everett residents. Named for literary figure Henry Wadsworth Longfellow, this was the first school in the district not to be named after a U.S. president.



Built in 1911, Longfellow Elementary was constructed to serve the needs of the rapidly growing population of Everett. The three-story, 12-room building replaced the 2-room wooden schoolhouse at 37th Street and Oakes Avenue.



Notable students included Washington politician Henry M. "Scoop" Jackson, who attended in the 1920's, and entertainer Stan Boreson who attended in the 1930's.



The school operated from 1911 to 1971, when it was converted to school district offices. It remained in use until 2013.

Stadium Reader Board



October 26, 2016

Everett Public Schools
Everett Memorial Stadium Pylon - FINAL FOR BID

DYKEMAN
INSPIRING STAYDAYS SINCE 1952



Daktronic Display:

Galaxy 16mm RGB outdoor LED Matrix Display, 3500 Series 4'-2"(h) x 10'-11"(w) x 0'-8" (d), double sided pylon.

Specifications:

"Memorial Stadium" text to be halo/backlit letters, solid face, painted metal finish.
District logo and text to be die-cut, solid face, painted metal finish, non-illuminated.
Existing brick pedestal to remain as-is. Sign cabinets to be painted district "blue".



Estimated overall square footage of signage:

- 1. Daktronics display, 131"(w) x 50"(h) = 45.5 sf
- 2. Memorial Stadium text, 105"(w) x 7.5"(h) = 5.5 sf
- 3. District logo and text, 40"(w) x 62"(h) = 17 sf

TOTAL PER PYLON SIDE = 68 sf



Upcoming events in support of a future capital bond proposal

- Feb 7 Capital Projects Update (2016 bond/levy)
- Mar 7 Future Bond Planning and ES No. 18 Educational Specifications/Schematic Design Review
- Mar 21 Safety and Security Update
- Mar 30 High School Capacity and Enrollment Outlook
- Apr 11 North MS Educational Specifications/Schematic Design Review



Summary

- Update on current projects funded by 2016 capital bond and levy, and other funding sources
- Update on events coming up in support of a future capital bond proposal